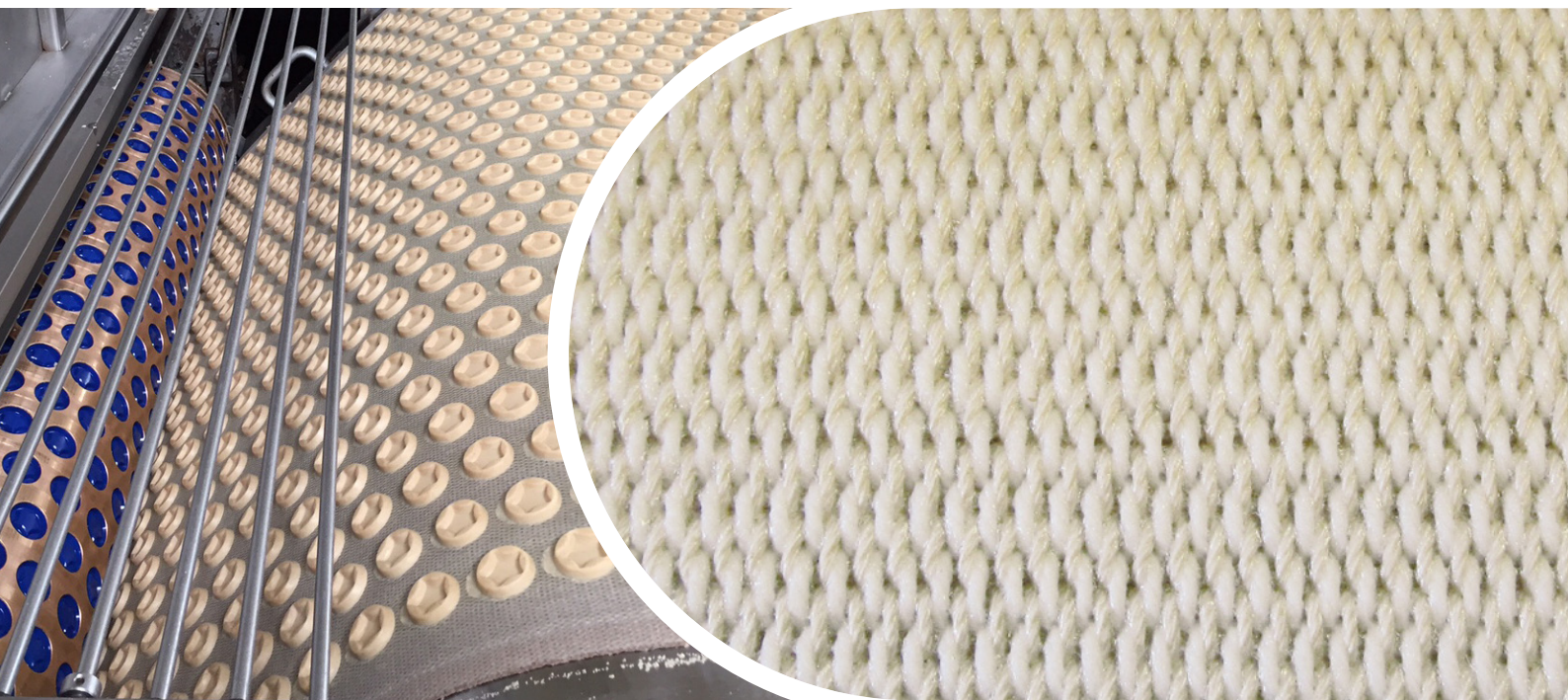


Habasit Rotary Molder Belts

The belts for best extraction of your biscuits

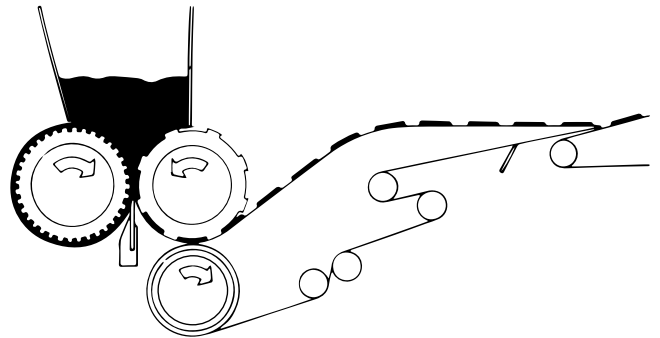


Habasit rotary molder belts

Rotary molding is a key process in shaping biscuits

Engraved rollers are used to shape biscuits from dough. The rotary molder belt extracts the raw biscuits from this roller supported by the forces of the extraction roller driving the belt. Tight transfer to the next processing belt ensures biscuit shape integrity.

A seamless belt woven to exact dimensions is the best solution to achieve uniform extraction and continuous biscuit molding quality.

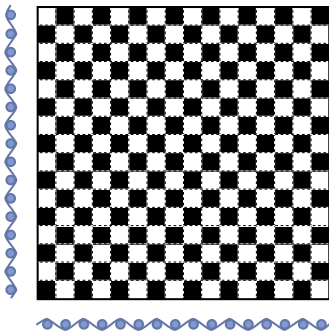


Common weave patterns

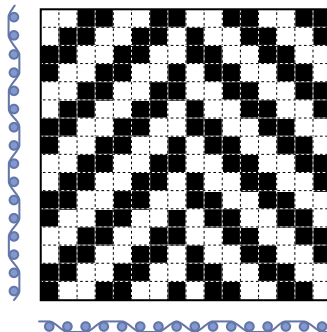
Habasit rotary molder belts are offered in three common weave patterns:

- Plain Weave – the versatile solution for most biscuits
- Herringbone Weave – the ultimate solution for most short and heavy doughs with demanding extraction needs
- Cross Twill Weave – an enlarged surface to handle larger biscuits or dough with a higher fat or moisture content

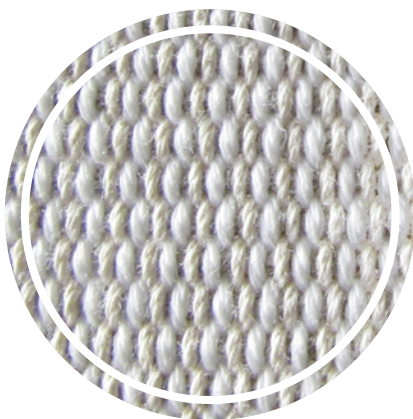
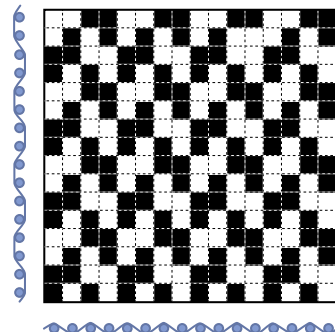
Plain Weave



Herringbone Weave



Cross Twill Weave



Natural fibers such as cotton and linen are the materials of choice as their excellent absorption properties of fat and moisture ensures best extraction performance.

Polyamide yarns stabilize the belt and add wear resistance for a long belt service.

All Habasit rotary molder belts provide a selvage belt edge avoiding edge fray and avoiding the risk of product contamination by single fibers.

Supporting biscuit quality

Features and benefits



Seamless woven belt

- Best process stability
- Constant running speed and belt tracking



Abrasion-resistant polyamide yarns

- Reduced fraying
- Improved belt lifetime



Selvage belt edges

- Reduced edge fraying



High belt flexibility

- Reduced gap between conveyors improves the transfer of goods to the next belt



High cotton content

- Excellent dough extraction


Common belt types


Product code	Belt thickness [mm]	Warp yarn 1	Warp yarn 2	Weave pattern	Nosebar radius [mm]
HRM-160 CPLP	1.6	Cotton	Polyamide	Plain	2
HRM-180 CPLP-WM1	1.8	Cotton/polyamide mix		Plain	2
HRM-200 CPLP	2.0	Cotton	Polyamide	Plain	2
HRM-240 CCLBH	2.4	Cotton		Cross twill	4
HRM-240 CPLH-WM1	2.4	Cotton/polyamide mix		Herringbone	2
HRM-280 CPLBH	2.8	Cotton	Polyamide	Cross twill	2
HRM-280 CPLH	2.8	Cotton	Polyamide	Herringbone	2




Habasit International AG

Römerstrasse 1
CH-4153 Reinach, Switzerland

 +41 61 715 15 15

 +41 61 715 15 55

 [habasit.com](https://www.habasit.com)

Registered trademarks

Copyright Habasit International AG

Subject to alterations

4388FLY.HRM-en1021HQR

Information provided herein does not constitute legal representations or warranties and may change without notice.

Please refer to the specifications/disclaimers provided in the respective product data sheets.

