

HabaSYNC® Timing Belts Fabrication Solutions

Habasit—Solutions in motion



Introduction	3
Cover solutions	4
Profile solutions	5
Tracking guides and modifications	6
Special solutions – Hinge Joint	7
Contacts	8

Product liability, application considerations

If the proper selection and application of Habasit products are not recommended by an authorized Habasit sales specialist, the selection and application of Habasit products, including the related area of product safety, are the responsibility of the customer. All indications / information are recommendations and believed to be reliable, but no representations, guarantees, or warranties of any kind are made as to their accuracy or suitability for particular applications. The data provided herein are based on laboratory work with small-scale test equipment, running at standard conditions, and do not necessarily match product performance in industrial use. New knowledge and experiences can lead to modifications and changes within a short time without prior notice.

BECAUSE CONDITIONS OF USE ARE OUTSIDE OF HABASIT'S AND ITS AFFILIATED COMPANIES' CONTROL, WE CANNOT ASSUME ANY LIABILITY CONCERNING THE SUITABILITY AND PROCESS ABILITY OF THE PRODUCTS MENTIONED HEREIN. THIS ALSO APPLIES TO PROCESS RESULTS / OUTPUT / MANUFACTURING GOODS AS WELL AS TO POSSIBLE DEFECTS, DAMAGES, CONSEQUENTIAL DAMAGES, AND FURTHER-REACHING CONSEQUENCES.

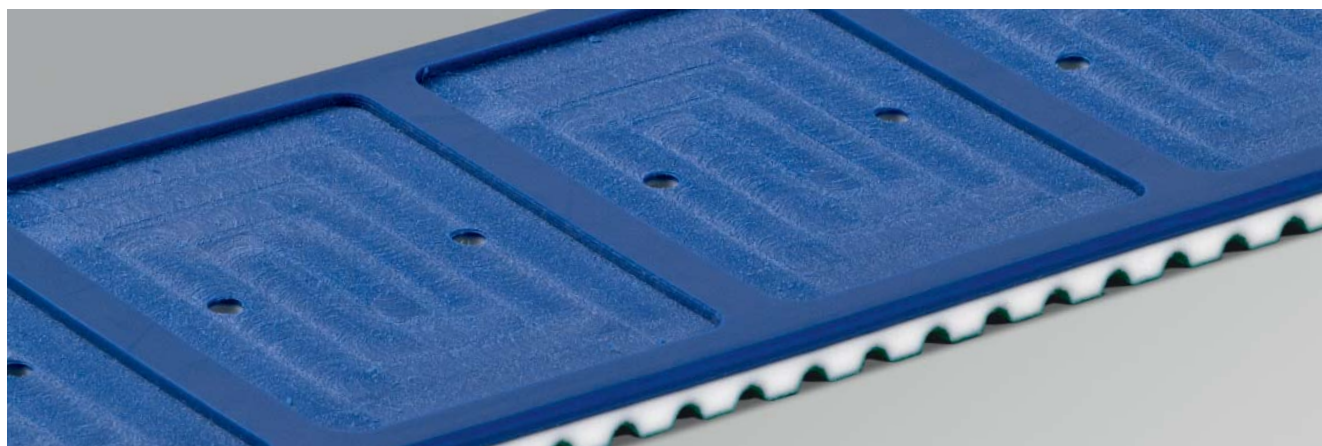


Covers, profiles and modifications to the conveying and tooth sides of HabaSYNC® timing belts can enhance performance of your conveying and linear-positioning application.

Covers in a variety of sizes and material characteristics offer a wide range of performance features to help move your products. Profiles, added with thermal-bonding processes or mechanical attachment, allow unique positioning and adjustment means. Modifications can enhance product performance too. Special machining to covers and profiles can further assure the most efficient means of moving your product or positioning your belt.

Additional machining steps are common such as holes for vacuum draw, pockets for product reading and deposit recognition, slots for handling and lateral grooves for venturing. Habasit's high investment in automated processes assures products with consistently tight precision.

Your needs	How we serve	What is done
Accurate belt tracking for narrow or side-loaded belts	Tracking guides	Longitudinal profiles added on tooth-side take-up lateral forces
Product positioning, spacing, pushing, lifting	Profiles	Thermally welded or mechanically attached on the conveying side
Quieter performing	Polyamide	Polyamide fabric added to the tooth side (PT)
Elimination of static charge	Antistatic fabric	AA fabric added to the tooth and conveying side
Product-handling issues like friction, release, shock, and wear resistance	Various material types and surface structures	Cover attached to the conveying side. Extruded, laminated or added with adhesives; dependant on material selection
Quick exchange of various designed profile shapes and locations	Mechanical mounting of profile inserts	Partial removing of teeth on the tooth side and mechanical addition
Precision thickness tolerance, adaption of roughness and friction	Grinding	Surface modification on the conveying side
Grooves and contours for specific handling, water release, or mounting needs	Milling	Cover modifications
Gentle but firm product manipulation, pockets and holders for products	Cutting of slots and sipes	Machined modification to the conveying side
Perforation for vacuum applications; holes for mechanical attachments	Punching	Precise hole modifications added to the conveying side
Fast and easy belt replacement without dismantling of the machine	Hinge Joint	Patent-pending mechanical joining method

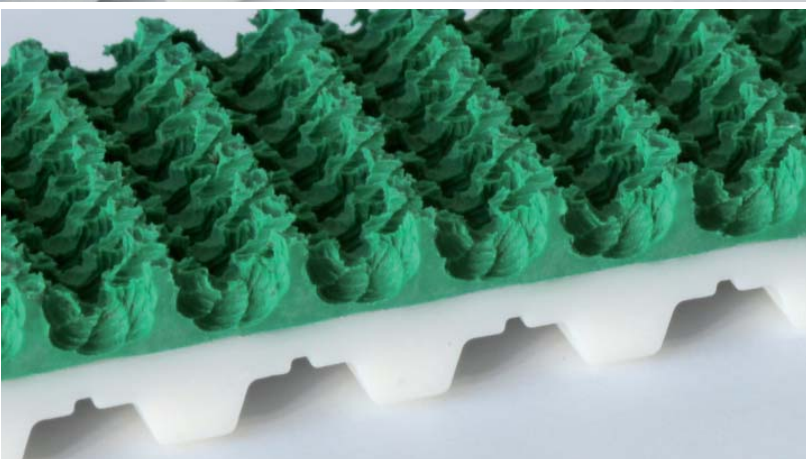
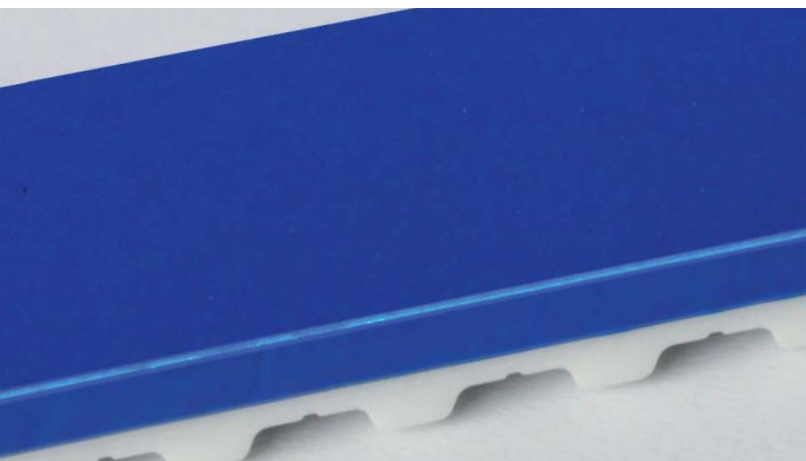


There are many options to customize a standard HabaSYNC® timing belt to enhance your conveyance design. Habasit provides a wide range of fabrication techniques and materials to fulfill even the extraordinary application need.

A broad range of cover materials offer the right friction to handle your product effectively. The choice of cover material and surface structure depends on your specific needs and the material properties.

Covered timing belts are used in various applications and feature the following attributes:

- Abrasion resistance
- Compressibility
- Ease of release
- Electrostatic discharge – antistatic features
- Food conveying
- Gentle movement
- Heat resistance
- High or low coefficient of friction
- Shock absorption



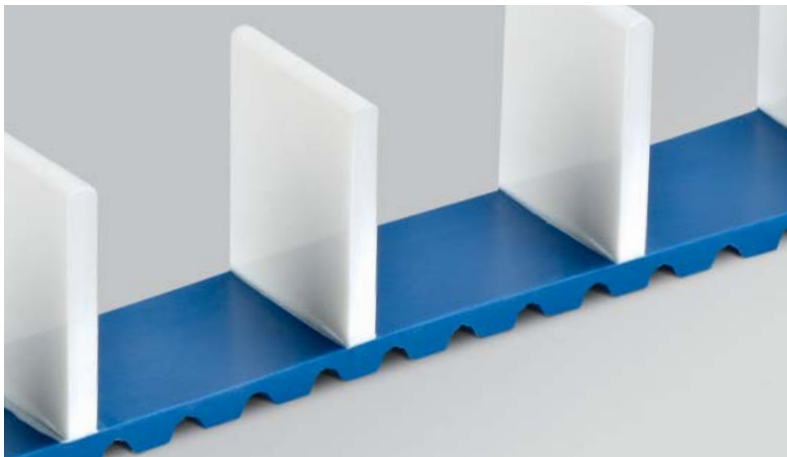
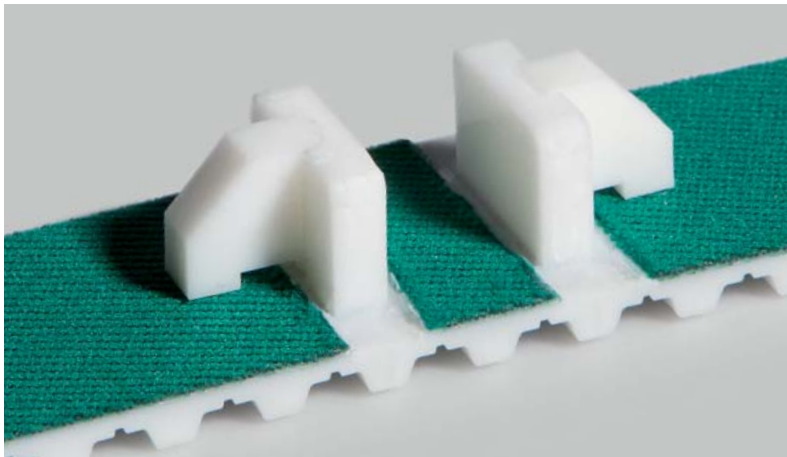
Thermoplastic profiles as well as mechanically mounted profiles can be added to assist in conveying and product placement. Profiles are common design solutions on single- and multiple-belt lines that are required to feed line content in a perfectly synchronized fashion. Standard as well as custom shape profiles can be added for sorting and separation, feeding, and indexing or actuation of products.

Thermoplastic profiles are welded to the conveying side of HabaSYNC® timing belts in order to accommodate special handling needs. Our standard profiles are made with 92 Shore A TPU – the same polyurethane hardness as our standard base belt. Other hardness and TPU types are available on request.

Thermoplastic profiles are obtained in several manners: extrusion, injection molding or machining. The choice of profile sourcing is dependent on shape, dimensions and quantities required.

We are very interested in creating a specific design unique to the requirement of your application. In order to select the right shape, dimension and process for your application, contact your local Habasit partner to discuss your specific need.

Additionally, we offer the HabaSYNC® mechanical partial tooth for application where ease of profile installation is needed and frequent relocation is required.

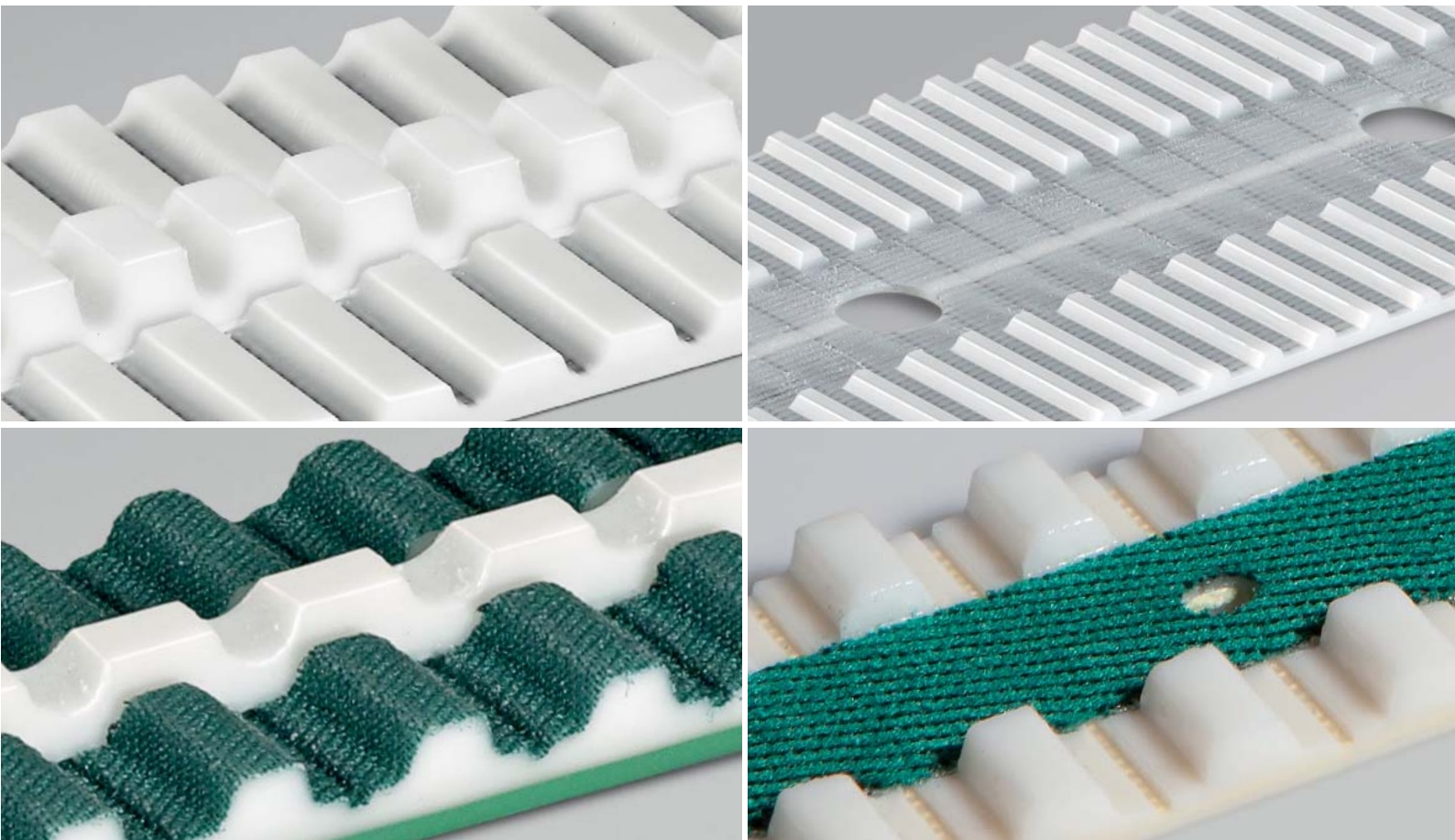


Integrated guide belts and weld-on tracking guides are available to assure proper straight tracking.

The tracking guide is placed on the tooth side of the timing belt. This provides true belt tracking in applications where long narrow belts are used to move products. Tracking guides are also common where products are side loaded, which can place a lateral shift on the belt's direction of travel.

The tracking guides can be integrally extruded or added with notches or longitudinal grooves to provide maximum flexibility around pulleys. Standard HabaSYNC® tracking guides are available in 92 Shore A hardness white thermoplastic polyurethane.

Modifications to the conveying and tooth sides of HabaSYNC® timing belts can enhance performance for your conveying and linear-positioning applications. Machine grinding or punching provide countless possibilities to adapt our timing belts to your specific application requirements.



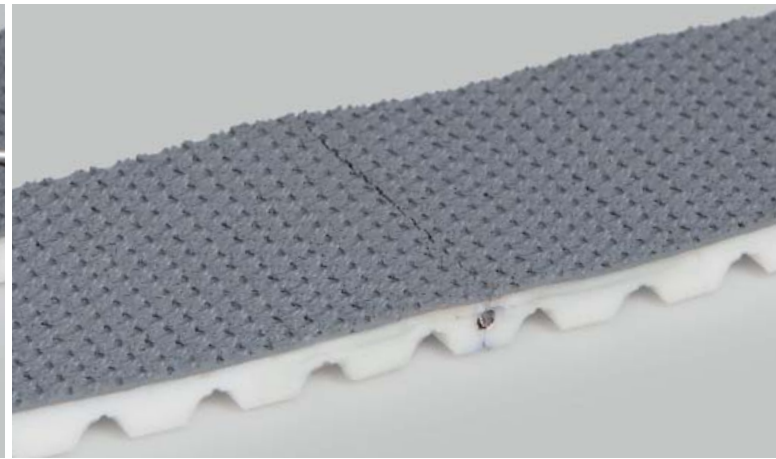
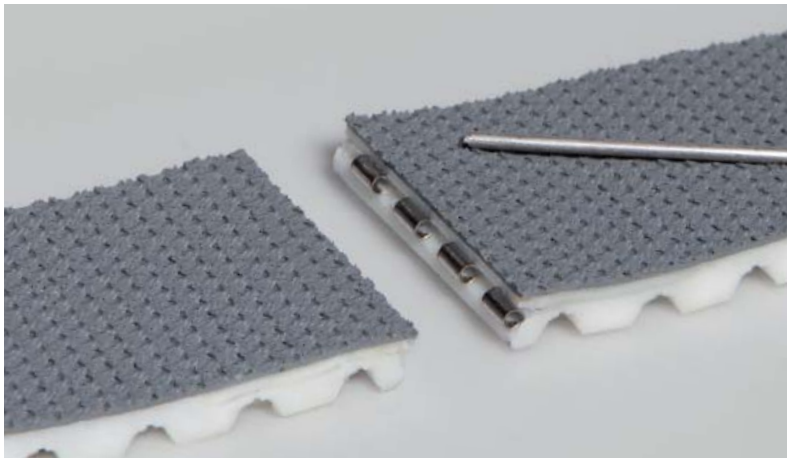
Patent-pending Hinge Joint – the mechanical timing belt fastener

In many synchronous-conveying applications, timing belts must be frequently replaced. Habasit's new mechanical Hinge Joint fastening system makes the job easy.

For the fast and easy exchange of installed timing belts, the patent-pending HabaSYNC® Hinge Joint has been developed. Assembly and disassembly with this simple and quick method cuts down standstill periods due to belt replacement.

The stainless-steel pivot parts are fully embedded within the cut-to-length belt ends. These are just brought together and a metal pin interlocks the hinges. Immediately, the belt is ready to run. Therefore, neither machine disassembling nor cumbersome joining procedures are required to install spare timing belts.

When preparing the belt ends for this type of joining all teeth remain unaffected and no voids are visible. Just a small cut can be seen on the conveying side of the timing belt afterwards. Furthermore, frictional covers in a large variety of sizes and characteristics can be added. Also modifications or the application of profiles are possible as usual.



Austria

Habasit GmbH
Wien
Phone: +43 1 690 66
www.habasit.at

Belgium

Habasit Belgium N.V.
Zaventem
Phone: +32 27 250 430
www.habasit.be

Canada

Habasit Canada Ltd.
Oakville
Phone: +1 905 827 41 31
www.habasit.ca

China

Habasit East Asia Ltd.
Hong Kong
Phone: +85 221 450 150
www.habasit.com.hk

Habasit (Shanghai) Co. Ltd.
Shanghai
Phone: +8621 5488 1228
Phone: +8621 5488 1218
www.habasit.com.hk

France

Habasit France S.A.S.
Mulhouse
Phone: +33 389 338 903
www.habasit.fr

Germany

Habasit GmbH
Eppertshausen
Phone: +49 6071 969 0
www.habasit.de

India

Habasit-lakoka Pvt. Ltd.
Coimbatore
Phone: +91 422 262 78 79
www.habasitlakoka.com

Italy

Habasit Italiana SpA
Customer Care:
Phone: 199 199 333
For int. calls: +39 0438 911 444
www.habasit.it

Japan

Habasit Nippon Co. Ltd.
Yokohama
Phone: +81 45 476 0371
www.habasit.co.jp

Netherlands

Habasit Netherlands BV
Nijkerk
Phone: +31 332 472 030
www.habasit.nl

New Zealand

Habasit Australasia Ltd.
Hornby
Phone: +64 3348 5600
www.habasit.co.nz

Norway

Habasit Norge A/S, Oslo
Phone: +47 815 58 458
www.habasit.no

Poland

Habasit Polska Sp. zo.o.
Dąbrowa Górnicza
Phone: +48 32639 02 40
www.habasit.pl

Russia

OOO Habasit Ltd.
St. Petersburg
Phone: +7 812 600 40 80
www.habasit.ru

Singapore

Habasit Far East Pte. Ltd.
Singapore
Phone: +65 686 255 66
www.habasit.com.sg

Spain

Habasit Hispanica S.A.
Barberà del Vallès
Phone: +34 937 191 912
www.habasit.es

Sweden

Habasit AB
Hindas
Phone: +46 30 122 600
www.habasit.se

Switzerland

Habasit GmbH
Reinach
Phone: +41 61 577 51 00
www.habasit.ch

Taiwan

Habasit Rossi (Taiwan) Ltd.
Taipei Hsien
Phone: +886 2 2267 0538
www.habasit.com.tw

Turkey

Habasit Kayis San. Ve Tic. Ltd. Sti.
Yenibosna-Bahcelievler-Istanbul
Phone: +90 212 654 94 04
www.habasit.com.tr

Ukraine

Habasit Ukraina
Vinnica
Phone: +38 0432 58 47 35
www.habasit.ua

United Kingdom and Ireland

Habasit (UK) Ltd.
Silsden
Phone: +44 844 835 9555
www.habasit.co.uk

USA

Habasit America
Conveyor belts, power
transmission belts, gearmotors
Suwanee, Georgia
Phone: +1 800 458 6431
www.habasitamerica.com

Habasit America
Seamless belts, timing belts
Middletown, Connecticut
Phone: +1 860 632 2211
www.habasitamerica.com

Rossi is one of Europe's largest manufacturers of gear reducers, gearmotors, inverters, standard and brakemotors, and is a member of the Habasit Group.

Rossi S.p.A.
Via Emilia Ovest 915/A
41123 Modena – Italy
Phone: +39 059 33 02 88
www.rossi-group.com
info@rossi-group.com

Headquarters

Habasit AG
CH-4153 Reinach-Basel
Phone +41 61 715 15 15
Fax +41 61 715 15 55
E-mail info@habasit.com
www.habasit.com

Copyright Habasit AG
Subject to alterations
Printed in Switzerland
Publication data:
4342BRO.TIM-en0413HQR