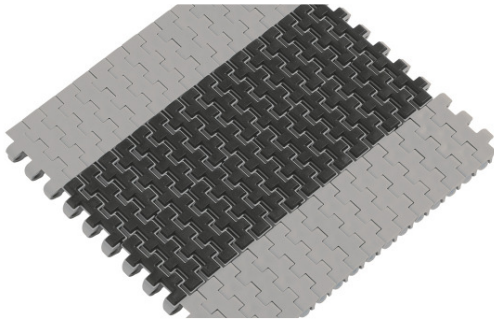
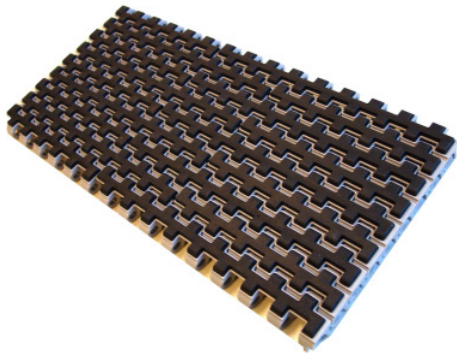


HabasitLINK[®]

Installation instructions for M1200 with GripTop

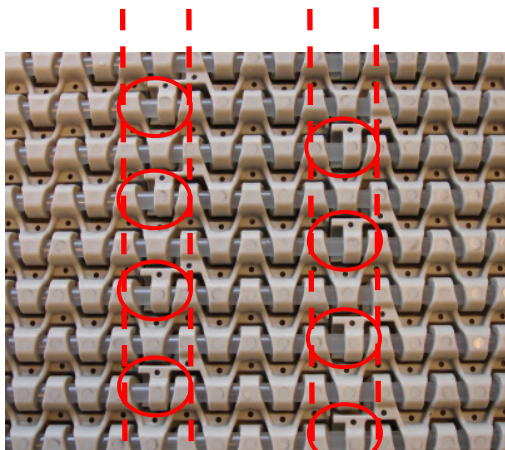



M1220 GripTop with standard indent 50mm (2"). Sprocket placement at any link possible



M1220 GripTop with universal modules M1220U10 +M1220U15

In case these modules are used as middle modules the sprocket placement is limited



M1220 GripTop with universal modules used as mid modules. Belt reverse side: Rod retaining link within the belt.  Location and distance depending on pattern. Min. distance allows placing of 1 sprocket between the retaining links.

  No sprocket placing between these lines

Product liability, application considerations

If the proper selection and application of Habasit products are not recommended by an authorized Habasit sales specialist, the selection and application of Habasit products, including the related area of product safety, are the responsibility of the customer. All indications / information are recommendations and believed to be reliable, but no representations, guarantees, or warranties of any kind are made as to their accuracy or suitability for particular applications. The data provided herein are based on laboratory work with small-scale test equipment, running at standard conditions, and do not necessarily match product performance in industrial use. New knowledge and experiences can lead to modifications and changes within a short time without prior notice. BECAUSE CONDITIONS OF USE ARE OUTSIDE OF HABASIT'S AND ITS AFFILIATED COMPANIES' CONTROL, WE CANNOT ASSUME ANY LIABILITY CONCERNING THE SUITABILITY AND PROCESS ABILITY OF THE PRODUCTS MENTIONED HEREIN. THIS ALSO APPLIES TO PROCESS RESULTS / OUTPUT / MANUFACTURING GOODS AS WELL AS TO POSSIBLE DEFECTS, DAMAGES, CONSEQUENTIAL DAMAGES, AND FURTHER-REACHING CONSEQUENCES.

